

FILL-RITE ***SOTERA***[®]

**Date Stamp & Serial Number
Reference Presentation**

How to Use the Date Stamp

Warranty

- To view the Fill-Rite/Sotera policy, see links below:
 - <https://www.fillrite.com/support/warranty>
 - <https://www.sotera.com/support/warranty>

Recalls

- When recalls are issued, a date stamp range is provided for the models affected (one recall has been issued in the history of Fill-Rite & Sotera)

Updates

- To determine if a product in the marketplace was purchased before or after an update was made by a manufacturer

How to Read the Date Stamp

Types of Date Code Formats

- MMYYY
 - 0691 – June 1991
- WWYY (Julian)
 - 5201 – 4th week of Dec. 2001
- DDDYY (Julian)
 - 36505 – Dec. 31, 2005
- YYDDD
 - 09002 – Jan. 2, 2009
- Year Day Serial
 - 170350005 – Feb. 4, 2017 (5th pump made that day)
- Month Date Year
 - September 20, 1998
- Quarter Year
 - 1 22 – Quarter 1 (Jan – Mar), 2022

Methods of Application

- Hammer punch
- Press punch
- Laser engraved
- Stamped on sticker
- Peen printed
- CNC milled
- Molded in (plastic)

JULIAN DATE CALENDAR

FOR LEAP YEARS ONLY

Day	Jan	Feb	Mar	Apr	May	Jun	Jul	Aug	Sep	Oct	Nov	Dec	Day
1	001	032	061	092	122	153	183	214	245	275	306	336	1
2	002	033	062	093	123	154	184	215	246	276	307	337	2
3	003	034	063	094	124	155	185	216	247	277	308	338	3
4	004	035	064	095	125	156	186	217	248	278	309	339	4
5	005	036	065	096	126	157	187	218	249	279	310	340	5
6	006	037	066	097	127	158	188	219	250	280	311	341	6
7	007	038	067	098	128	159	189	220	251	281	312	342	7
8	008	039	068	099	129	160	190	221	252	282	313	343	8
9	009	040	069	100	130	161	191	222	253	283	314	344	9
10	010	041	070	101	131	162	192	223	254	284	315	345	10
11	011	042	071	102	132	163	193	224	255	285	316	346	11
12	012	043	072	103	133	164	194	225	256	286	317	347	12
13	013	044	073	104	134	165	195	226	257	287	318	348	13
14	014	045	074	105	135	166	196	227	258	288	319	349	14
15	015	046	075	106	136	167	197	228	259	289	320	350	15
16	016	047	076	107	137	168	198	229	260	290	321	351	16
17	017	048	077	108	138	169	199	230	261	291	322	352	17
18	018	049	078	109	139	170	200	231	262	292	323	353	18
19	019	050	079	110	140	171	201	232	263	293	324	354	19
20	020	051	080	111	141	172	202	233	264	294	325	355	20
21	021	052	081	112	142	173	203	234	265	295	326	356	21
22	022	053	082	113	143	174	204	235	266	296	327	357	22
23	023	054	083	114	144	175	205	236	267	297	328	358	23
24	024	055	084	115	145	176	206	237	268	298	329	359	24
25	025	056	085	116	146	177	207	238	269	299	330	360	25
26	026	057	086	117	147	178	208	239	270	300	331	361	26
27	027	058	087	118	148	179	209	240	271	301	332	362	27
28	028	059	088	119	149	180	210	241	272	302	333	363	28
29	029	060	089	120	150	181	211	242	273	303	334	364	29
30	030		090	121	151	182	212	243	274	304	335	365	30
31	031		091		152		213	244		305		366	31

USE IN 2004, 2008, 2012, 2016, 2020, 2024, ETC.

For further understanding of Julian dating, visit https://en.wikipedia.org/wiki/Julian_day

Location – 15-20 GPM AC Pumps

Series: 600

Method: Press punch

Format: WWYY



Date stamp

located on the bottom left of the information tag / laser etched information

Serial number

located on the bottom right of the information tag / laser etched information

Manufacturing location

located on the top right of the information tag / laser etched information

Series: 700

Method: Hammer punch

Format: WWYY



Date stamp

- Before Jan 2022, located on nozzle side under logo
- After Jan 2022, located above rotor cover



Serial number

located on the motor tag on the back of the pump in the bottom-left corner of the table

Manufacturing location

located on the top right of the information tag / laser etched information

Location – 25-35 GPM AC Pumps

Series: NX25-120/NX25-240

Method: Laser engraved

Format: Julian Date



Date stamp
located on the
bottom left of the
table on the front
label of the pump

Serial number
located on the
bottom right of the
table on the front
label of the pump

Series: 300

Method: CNC milled

Format: YYDDD



Date stamp
located on the
front side below
the outlet flange



Serial number
located on the
barrel label in the
bottom-right corner
of the table

Location – 15-25 GPM DC Pumps

Series: 1200/2400/
3200/4200/400
Method: Press punch /
Laser engraved
Format: WWYY



Date stamp
located on the
bottom left of the
information tag /
laser etched
information

Serial number
located on the bottom
right of the information
tag / laser etched
information

**Manufacturing
location**
located on the
top right of the
information tag /
laser etched
information

Series: NX3200/NX25-DDC
Method: Laser engraved
Format: Julian Date



Date stamp
located on the
bottom left of the
table on the front
label of the pump

Serial number
located on the
bottom right of the
table on the front
label of the pump

Location – Portable DC Pumps

Series: 1600

Method: Press punch

Format: WWYY



Date stamp
located on the
bottom of the
pump

Series: RD

Method: Laser engraved

Format: DDDYY



Date stamp
located on the
handle under the
Fill-Rite logo by
“MFG DATE”

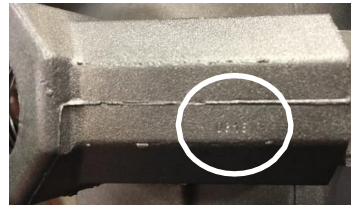
Serial number located
on the handle under
the Fill-Rite logo by
“NO.”

Location – Hand Pumps

Series: Rotary

Method: Peen printed

Format: WWYY

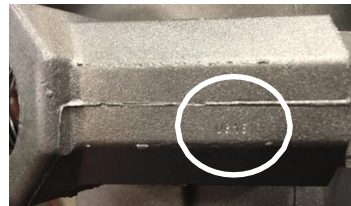


Date stamp located on the top of the nozzle hole

Series: Piston

Method: Peen printed

Format: WWYY



Date stamp located on the top of the nozzle hole

Location – Accessories

Series: Nozzles

Method: Molded in

Format: MMY (circle)



Date stamp

located on the right side of the nozzle handle

Series: Whip Hose

Method: Press punched

Format: Month Date Year



Date stamp

located on the left side of the steel inlet / outlet

Series: UL Hose

Method: Stamped on sticker

Format: Quarter Year



Date stamp

located on the middle/right side of sticker on fitting

Manufacturing location

located on the middle/right side of sticker on fitting

Location – Mechanical Meters

Series: 800 Mechanical
Method: CNC milled
Format: DDDYY



Date stamp
located on the
back of the meter
housing

Series: TN
Method: Press punched
Format: DDDYY



Date stamp
located on the
back of the meter
housing

Series: 900 Mechanical
Method: CNC milled
Format: DDDYY



Date stamp
located above the
calibration screw



Manufacturing location
located on bottom
right corner of
faceplate



Manufacturing location
located on bottom
right corner of
faceplate

Location - Digital Meters

Series: TT10

Method: CNC milled or
Molded in (Poly)

Format: Year Day Serial



Date stamp
located under the
rubber boot on
the bottom of the
meter housing

Series: 800 Digital

Method: Press punched

Format: YYDDD



Date stamp located
on the bac of the
meter housing

Series: 900 Digital

Method: CNC milled

Format: DDDYY



Date stamp located
above the calibration
screw

Location – Precision Meters

Series: TS

Method: Laser engraved

Format: N/A



Date stamp located on the back of the meter housing on tag

Series: TS

Method: Laser engraved

Format: N/A



Date stamp located on the right side of the right-angle drive housing

Series: TS

Method: Laser engraved

Format: WWYY



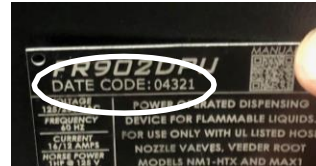
Date stamp located on the right side of the electrical box

Location – Cabinets

Series: FR102

Method: Laser engraved

Format: DDDYY



Date stamp located on the tag on the back of the cabinet enclosure underneath the part number

Series: FR902DPU/FR302DPU

Method: Laser engraved

Format: DDDYY



Date stamp located on the tag on the back of the cabinet enclosure underneath the part number

Location – Cabinets

Series: FR702

Method: Hammer punch

Format: WWYY



Date stamp

- Before Jan 2022, located on nozzle side under logo
- After Jan 2022, located above rotor cover



Serial number located on the motor tag on the back of the pump in the bottom-left corner of the table

Series: FR902 Mechanical Dispenser

Method: CNC milled

Format: DDDYY



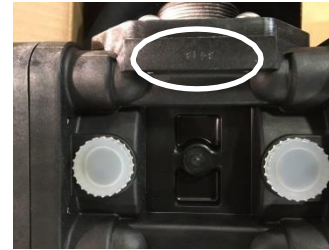
Date stamp located above the calibration screw on the meter in the top right corner after removing the cabinet enclosure

Location – DF & Sotera

Series: 400

Method: Molded in

Format: WWYY



Date stamp
located on the
side of the
diaphragm near
the inlet flange

Series: DF

Method: Preen printed

Format: Julian Date



Date stamp
located on the
top of the pump
housing

Product Lines Without Date Stamps

- Specialty hand pumps (e.g., pneumatic)
- Hoses (except for UL listed hoses)
- Filters
- Swivels
- Suction pipes
- TM meters