

NDT Series Networked Day Tank Level Controller

The Networked Day Tank Level Controller (**NDT**) is a UL-508 listed PLC-based control panel, designed with features and control option flexibility to accommodate basic and advanced fuel control needs.

NDT panels are intended for use where day tanks rely on remote supply pumps such as submersible turbine pumps or a duplex pump set. For applications where day tanks are equipped with local, dedicated supply pumps integral to the assembly, use Standard Day Tank (**SDT**) panels.

The **NDT** has been designed for integrated operation with a **DPC** Duplex Pump Controller or **MCP** Master Control Panel via Ethernet LAN. The **NDT** communicates operational and alarm conditions to the Building Automation System (BAS) via ModBus RTU, ModBus TCP or via consolidated points list available from the **DPC** or **MCP**. Optional BACnet IP available.

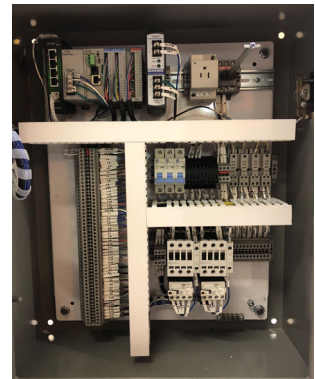


Panel Features

Cabinet: 24" Wide x 30" High x 10" Deep
Enclosure: NEMA 4/12, 14 GA. Steel, Continuous Seam Welded
Mounting Style: Wall-Mounted
Open Style: Right to Left
Door Hinge: Formed Steel Hinge w/ Stainless Steel Hinge Pins
Assembly: Mounted, Wired and Labeled per UL on a Removable Sub-Plate

Optional: *OSHPD Shake-Table Seismic Certified*
Finish: Prime-coated and Painted
Interior: White Baked Enamel
Exterior: Grey Textured Enamel

Optional: *Stainless Steel NEMA 4X Construction*



The **NDT** Networked Day Tank Level Control Panel is designed to monitor the following Input devices:

- Up to (6) Day Tank Level Switch Points
- Generator Run Contact
- Day Tank Level 4-20mA Transmitter
- Day Tank Fuel Temperature 4-20mA Transmitter
- Inlet Flow Switch
- Day Tank Leak Switch
- Tertiary Containment Leak Switch
- Return Pump 4-20mA Analog Current Sensor
- Motorized Valve Open / Close End Switches



The **NDT** is equipped with the following control features and alarm indicators:

- ◆ Control Power On/Off Switch, Door-mounted
- ◆ Control Power On Indicator Light
- ◆ Fill Control Hand / Off / Auto Selector Switch, Illuminated Green
- ◆ Return Pump Hand / Off / Auto Selector Switch, Illuminated Red
- ◆ Alarm Indicator Light
- ◆ Alarm Horn **optional*
- ◆ Horn Silence Push Button **optional*
- ◆ Cooling Fan w/ Thermostat control **optional*
- ◆ Cabinet Heater w/ Thermostat control **optional*
- ◆ Operator Interface Terminal (OIT) Touch-Screen Display
 - ◆ Day Tank Level Switch Status Indicators
 - ◆ Day Tank Level Volume Readout
 - ◆ Day Tank Fuel Temperature Readout
 - ◆ Leak Sensor Status Indicators
 - ◆ Alarm Reset Soft-Key
 - ◆ Pump and Valve Status Indicators
 - ◆ Digital Input / Output Display Screen(s)
 - ◆ Maintenance Screen(s)
 - ◆ System Set-up Screen(s) – *Password Protected*
 - ◆ Alarm Status Screen
 - ◆ Lamp / Horn Test Soft-Button
 - ◆ Event Log Screen – *Password Protected Log Deletion*



Day Tank Refresh Cycle

The **NDT** panel OIT includes a Maintenance screen for programming a weekly day tank refresh cycle schedule for each day tank. Refresh cycle allows fuel in day tanks to be recirculated back to main tank for filtration/maintenance, as well as performs system automatic testing on a regular basis outside of emergency run conditions. Day Tank Refresh can be initiated on a weekly automatic schedule or on-demand via OIT.

NDT Panel Model String

MFR	PANEL TYPE	VOLT-AGE	PHASE	SUPPLY PUMPS	HP	RETURN PUMPS	HP	NEMA	OPTIONS
CSI-	NDT	115-	1-	X-	X-	1-	1-	4-	ES-AL-AH-CF-H-UPS
<i>Networked Day Tank Panel, 115vAC, 1-Phase, (1) Return Pump, NEMA 4 Enc. w/ OPTIONS</i>									

Options:

ES – Emergency Stop, Door-mounted
 AL – Alarm Light
 AH – Alarm Horn

CF – Cooling Fan w/ Thermostat
 H – Cabinet Heater w/ Thermostat
 UPS— Integrated UPS