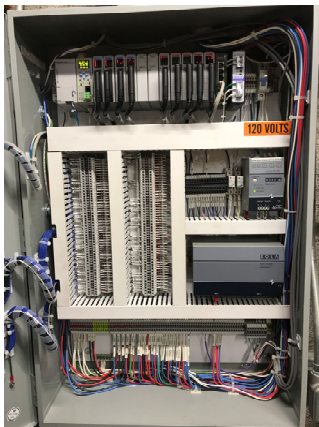


MCP Series Master Control Panel

The Master Control Panel (**MCP**) is a UL-508 listed PLC-based control panel, designed with features and control option flexibility to accommodate advanced fuel control needs. **MCP-2** (two tank) and **MCP-4** (four tank) configurations available.

MCP panels are intended for use where one or more main tanks are equipped with submersible turbine pumps, capable of delivering fuel to one or more day tanks, boiler loop and/or fuel oil filtration system. **MCP** panels are designed to work with Networked Day Tank (**NDT**) panels, Networked Filtration Controllers (**NFCP**) via Ethernet LAN, or 3rd party systems with dry-contact fuel request signals.

The **MCP** communicates operational and alarm conditions to the Building Automation System (BAS) via ModBus RTU or ModBus TCP protocol. If integrated via Ethernet LAN, all BAS Integration Points can be accumulated at **MCP** for a single-point connection or polled at each local device. Optional BACnet IP available.



Panel Features

Cabinet:	36" Wide x 48" High x 10" Deep
Enclosure:	NEMA 4/12, 14 GA. Steel, Continuous Seam Welded
Mounting Style:	Wall-Mounted
Open Style:	Right to Left
Door Hinge:	Formed Steel Hinge w/ Stainless Steel Hinge Pins
Assembly:	Mounted, Wired and Labeled per UL on a Removable Sub-Plate
<i>Optional:</i>	<i>OSHDP Shake-Table Seismic Certified</i>
Finish:	Prime-coated and Painted
	Interior: White Baked Enamel
	Exterior: Grey Textured Enamel
<i>Optional:</i>	<i>Stainless Steel NEMA 4X Construction</i>

The **MCP** Master Control Panel is designed to monitor the following devices:

- ModBus Interface with most standard ATG Systems (Level / Leak data)
- Up to (4) Main Tank 4-20mA Level Signals
- Up to (4) Main Line Inlet Flow Switches
- Up to (24) Supply / Return Motorized Ball Valve Position Switches
- Up to (8) Supply Pump 4-20ma Analog Current Sensors
- Up to (2) Generator / Boiler Remote Emergency Stop Switches (EPO)
- Up to (8) Day Tank, Boiler Loop and / or Filter System fuel requests
- Up to (2) Boiler / Generator Loop 4-20mA Analog Pressure Signals



The **MCP** is equipped with the following control features and alarm indicators:

- ◆ Control Power On/Off Switch, Door-mounted
- ◆ Control Power On Indicator Light
- ◆ Pump Circuit Door Disconnect Switch **optional*
- ◆ Supply Pump Hand / Off / Auto Selector Switches, Illuminated Green
- ◆ Alarm Indicator Light
- ◆ Alarm Horn **optional*
- ◆ Horn Silence Push Button **optional*
- ◆ Cooling Fan w/ Thermostat control **optional*
- ◆ Cabinet Heater w/ Thermostat control **optional*
- ◆ 10" Operator Interface Terminal (OIT) Touch-Screen Display
- ◆ Main Tank Volume Indication
- ◆ Leak Sensor Status Indication
- ◆ Generator Run-time Remaining Indicator
- ◆ Alarm Reset Soft-Key
- ◆ Pump and Valve Status Indicators
- ◆ Day Tank Status Indicators
- ◆ Digital Input / Output Display Screen(s)
- ◆ Maintenance Screen(s)
- ◆ System Set-up Screen(s) – *Password Protected*
- ◆ Alarm Status Screen
- ◆ Lamp / Horn Test Soft-Button
- ◆ Event Log Screen – *Password Protected Log Deletion*



MCP Panel Model String

MFR	PANEL TYPE	VOLT-AGE	PHASE	SUPPLY PUMPS	HP	RETURN PUMPS	HP	NEMA	OPTIONS
CSI-	MCP-4	460-	3-	8-	1.5-	X-	X-	4X-	ES-AL-AH- CF-H-UPS
<i>4-Tank Master Control Panel, 460vAC, 3-Phase, (8) Supply Pumps, NEMA 4X Enc. w/ OPTIONS</i>									

Options:

ES – Emergency Stop, Door-mounted
 AL – Alarm Light
 AH – Alarm Horn

CF – Cooling Fan w/ Thermostat
 H – Cabinet Heater w/ Thermostat
 UPS— Integrated UPS